

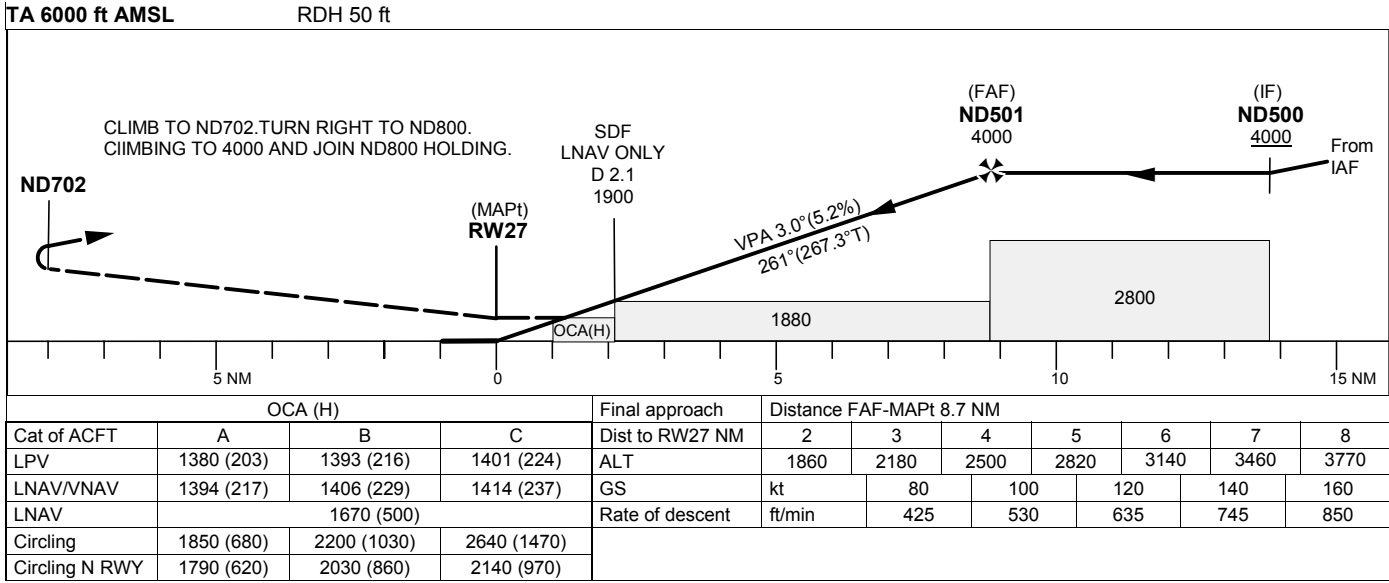
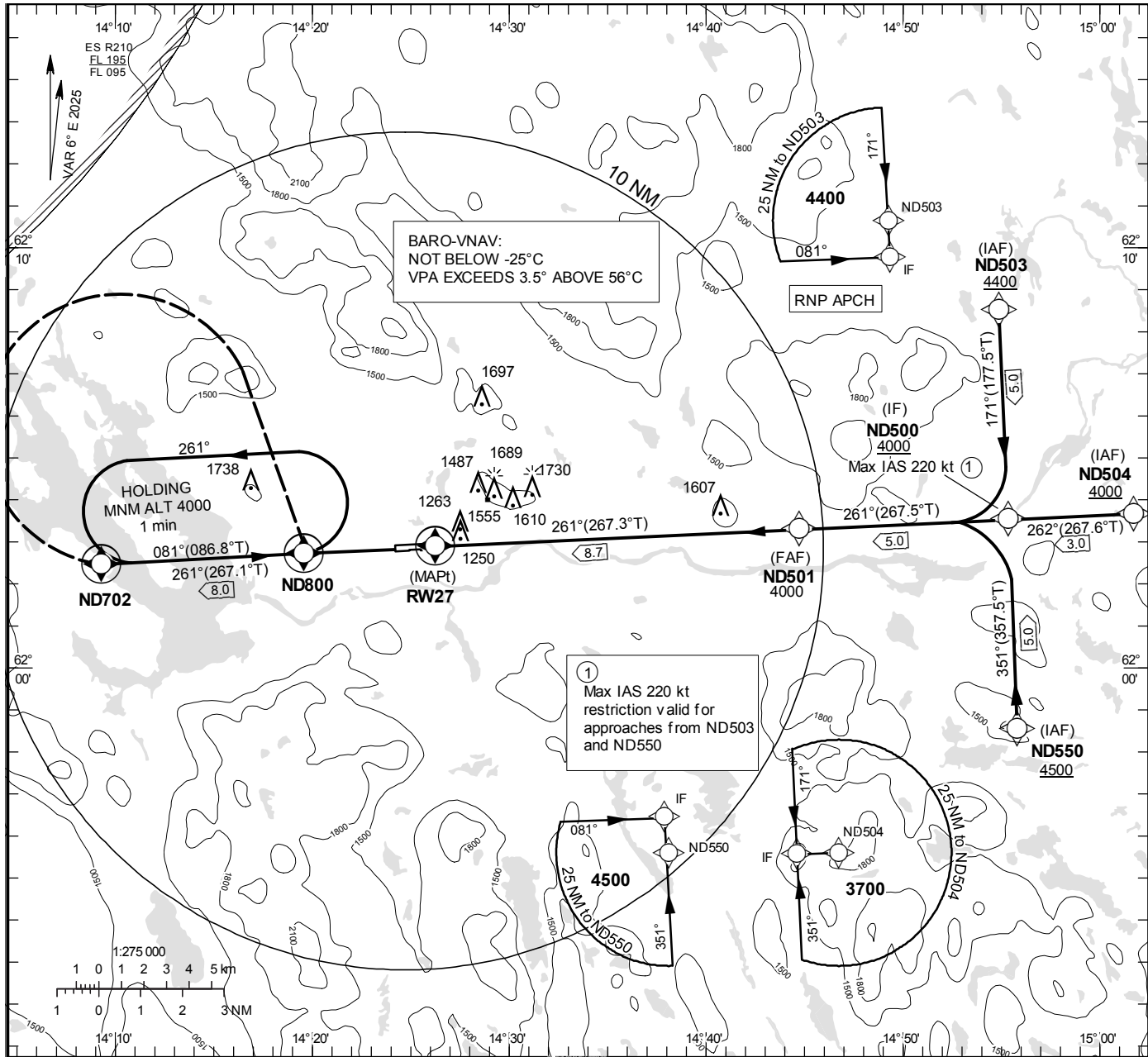
**INSTRUMENT
APPROACH
CHART – ICAO**

THR ELEV 1177 ft, AD ELEV 1178 ft
OCH are related to THR.
Circling OCH are related to AD ELEV.
BRG are MAG (True).
ALT, HGT and ELEV in ft.

SVEG INFORMATION 122.205

SVEG
RNP RWY 27

EGNOS Ch 90027 E 27A



CHANGE: Editorial

SVEG

RNP RWY 27 via ND550

| Path Desc | Waypoint Identifier | Fly-over | Course °M(°T) | Dist (NM) | Turn Dir | Altitude | Speed | VPA/ RDH | Rec Navaid | Navigation Specification |
|-----------|---------------------|----------|---------------|-----------|----------|----------|-------|----------|------------|--------------------------|
| IF | ND550 | - | - | - | - | +4500 | - | - | - | RNP APCH |
| TF | ND500 | - | 351°(357.5°) | 5.0 | - | +4000 | -220 | - | - | RNP APCH |

RNP RWY 27 via ND504

| Path Desc | Waypoint Identifier | Fly-over | Course °M(°T) | Dist (NM) | Turn Dir | Altitude | Speed | VPA/ RDH | Rec Navaid | Navigation Specification |
|-----------|---------------------|----------|---------------|-----------|----------|----------|-------|----------|------------|--------------------------|
| IF | ND504 | - | - | - | - | - | - | - | - | RNP APCH |
| TF | ND500 | - | 262°(267.6°) | 3.0 | - | +4000 | - | - | - | RNP APCH |

RNP RWY 27 via ND503

| Path Desc | Waypoint Identifier | Fly-over | Course °M(°T) | Dist (NM) | Turn Dir | Altitude | Speed | VPA/ RDH | Rec Navaid | Navigation Specification |
|-----------|---------------------|----------|---------------|-----------|----------|----------|-------|----------|------------|--------------------------|
| IF | ND503 | - | - | - | - | +4400 | - | - | - | RNP APCH |
| TF | ND500 | - | 171°(177.5°) | 5.0 | - | +4000 | -220 | - | - | RNP APCH |

| Path Desc | Waypoint Identifier | Fly-over | Course °M(°T) | Dist (NM) | Turn Dir | Altitude | Speed | VPA/ RDH | Rec Navaid | Navigation Specification |
|-----------|---------------------|----------|---------------|-----------|----------|----------|-------|----------|------------|--------------------------|
| IF | ND500 | - | - | - | - | +4000 | - | - | - | RNP APCH |
| TF | ND501 | - | 261°(267.5°) | 5.0 | - | +4000 | - | - | - | RNP APCH |
| TF | RW27 | Y | 261°(267.3°) | 8.7 | - | @1227 | - | -3.0/50 | - | RNP APCH |
| TF | ND702 | Y | 261°(267.1°) | 8.0 | - | - | - | - | - | RNP APCH |
| DF | ND800 | Y | - | - | R | +4000 | - | - | - | RNP APCH |

| Path Desc | Waypoint Identifier | Fly-over | Course °M(°T) | Dist (NM) | Turn Dir | Altitude | Speed | VPA/ RDH | Rec Navaid | Navigation Specification |
|-----------|---------------------|----------|---------------|-----------|----------|----------|-------|----------|------------|--------------------------|
| HM | ND800 | Y | 081°(086.8°) | - | L | +4000 | - | - | - | RNP 1 |

FAS Data Block

RNP RWY 27

Input data

| | |
|-------------------------------------|---------------|
| Operation Type | 0 |
| SBAS Provider | 1 (EGNOS) |
| Airport Identifier | ESND |
| Runway | 27 |
| Runway Letter | 0 (None) |
| Approach Performance Designator | 0 |
| Route Indicator | |
| Reference Path Data Selector | 0 |
| Reference Path Identifier | E27A |
| LTP/FTP Latitude | 620253.2390N |
| LTP/FTP Longitude | 0142614.1905E |
| LTP/FTP Ellipsoidal Height (metres) | 391.8 |
| FPAP Latitude | 620250.4105N |
| Delta FPAP Latitude (seconds) | -2.8285 |
| FPAP Longitude | 0142417.2795E |
| Delta FPAP Longitude (seconds) | -116.9110 |
| Threshold Crossing Height | 50.0 |
| TCH Units Selector | 0 (feet) |
| Glidepath Angle (degrees) | 3.00 |
| Course Width (metres) | 105.00 |
| Length Offset (metres) | 0 |
| HAL (metres) | 40.0 |
| VAL (metres) | 50.0 |

Output data

| | |
|----------------------|--|
| Data Block | 10 04 0E 13 05 1B 00 00 01 37 32 05 6E CF A0 1A 5D 20 32 06 4E 23 E7 E9 FF A2 6E FC F4 01 2C 01 64 00 C8 FA 73 B7 53 6B |
| Calculated CRC Value | 73B7536B |

Required Additional Data

| | |
|-------------------------------------|-------|
| ICAO Code | ES |
| LTP/FTP Orthometric Height (metres) | 358.7 |